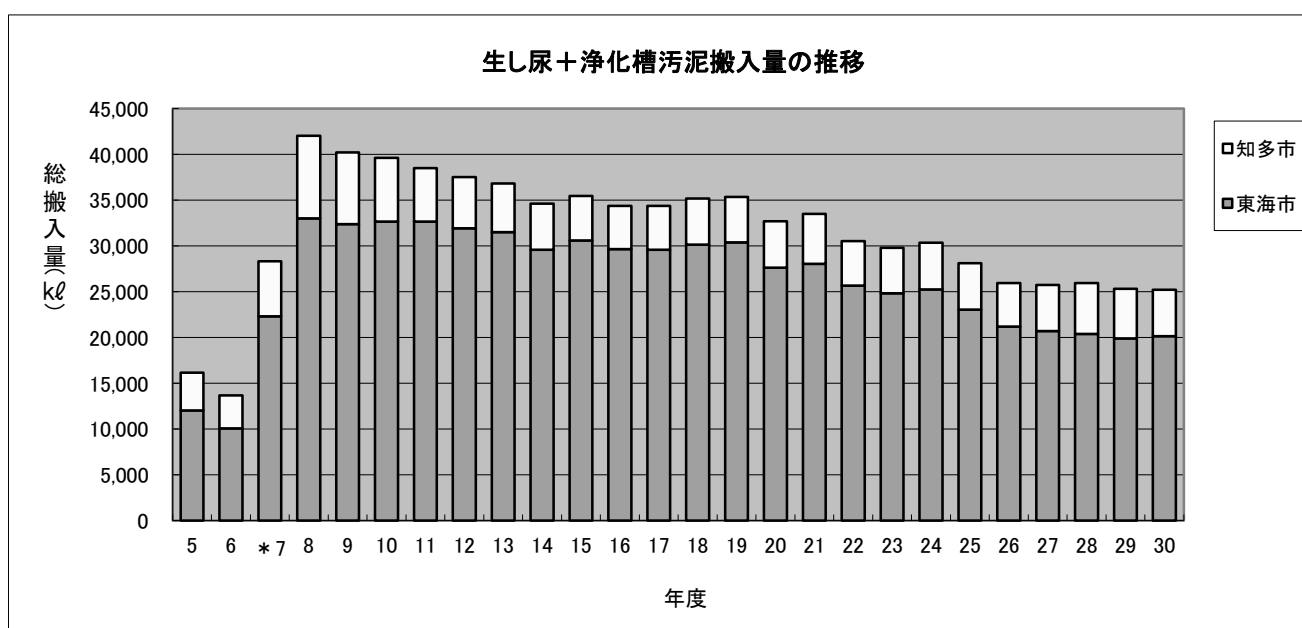


投入量（搬入量）の推移

(単位 kℓ)

年度	生し尿		浄化槽汚泥*		生し尿+浄化槽汚泥						日平均 処理量	総搬入 日数(日)	日平均 搬入量
	東海市	知多市	東海市	知多市	東海市	対合計構 成比(%)	知多市	対合計構 成比(%)	合計	構成比(%)			
5	12,032.90	4,140.40	0.00	0.00	12,032.90	74.40	4,140.40	25.60	16,173.30	100.00	44.3	267	60.6
6	10,099.90	3,570.30	0.00	0.00	10,099.90	73.88	3,570.30	26.12	13,670.20	100.00	37.5	271	50.4
*7	8,994.12	3,010.00	13,317.47	3,001.71	22,311.59	78.77	6,011.71	21.23	28,323.30	100.00	77.4	270	104.9
8	8,001.18	2,549.50	25,029.39	6,467.30	33,030.57	78.56	9,016.80	21.44	42,047.37	100.00	115.2	247	170.2
9	7,449.18	2,067.08	24,927.93	5,779.34	32,377.11	80.49	7,846.42	19.51	40,223.53	100.00	110.2	246	163.5
10	6,392.13	1,911.79	26,266.91	5,046.04	32,659.04	82.44	6,957.83	17.56	39,616.87	100.00	108.5	246	161.0
11	6,363.09	1,716.39	26,294.02	4,146.69	32,657.11	84.78	5,863.08	15.22	38,520.19	100.00	105.2	245	157.2
12	5,607.69	1,416.22	26,339.36	4,157.70	31,947.05	85.14	5,573.92	14.86	37,520.97	100.00	102.8	246	152.5
13	5,576.93	1,285.32	25,952.33	4,000.45	31,529.26	85.64	5,285.77	14.36	36,815.03	100.00	100.9	245	150.3
14	5,299.80	1,445.28	24,297.86	3,578.66	29,597.66	85.49	5,023.94	14.51	34,621.60	100.00	94.9	247	140.2
15	4,921.59	1,305.91	25,701.78	3,549.16	30,623.37	86.32	4,855.07	13.68	35,478.44	100.00	96.9	248	143.1
16	4,784.07	1,133.94	24,889.35	3,574.78	29,673.42	86.30	4,708.72	13.70	34,382.14	100.00	94.2	243	141.5
17	4,563.69	1,212.53	25,046.07	3,572.96	29,609.76	86.09	4,785.49	13.91	34,395.25	100.00	94.2	245	140.4
18	4,862.50	1,411.09	25,275.35	3,642.22	30,137.85	85.64	5,053.31	14.36	35,191.16	100.00	96.4	246	143.1
19	4,262.59	1,161.80	26,137.33	3,805.71	30,399.92	85.95	4,967.51	14.05	35,367.43	100.00	96.6	246	143.8
20	3,960.90	1,071.19	23,667.12	4,017.68	27,628.02	84.45	5,088.87	15.55	32,716.89	100.00	89.6	245	133.5
21	3,799.84	1,198.97	24,247.25	4,266.46	28,047.09	83.69	5,465.43	16.31	33,512.52	100.00	91.8	243	137.9
22	3,522.87	914.07	22,143.88	3,947.01	25,666.75	84.08	4,861.08	15.92	30,527.83	100.00	83.6	244	125.1
23	3,808.50	892.86	21,041.60	4,061.14	24,850.10	83.38	4,954.00	16.62	29,804.10	100.00	81.4	244	122.1
24	4,712.15	857.13	20,546.64	4,245.81	25,258.79	83.19	5,102.94	16.81	30,361.73	100.00	83.2	245	123.9
25	2,891.22	948.44	20,164.77	4,127.42	23,055.99	81.96	5,075.86	18.04	28,131.85	100.00	77.1	243	115.8
26	2,258.97	788.28	18,948.16	3,961.79	21,207.13	81.70	4,750.07	18.30	25,957.20	100.00	71.1	244	106.4
27	2,299.74	807.41	18,429.41	4,202.18	20,729.15	80.54	5,009.59	19.46	25,738.74	100.00	70.3	243	105.9
28	1,952.42	839.60	18,450.63	4,715.11	20,403.05	78.60	5,554.71	21.40	25,957.76	100.00	71.1	243	106.8
29	1,910.47	1,144.09	18,013.58	4,254.81	19,924.05	78.68	5,398.90	21.32	25,322.95	100.00	69.4	244	103.8
30	1,866.40	758.29	18,275.88	4,308.62	20,142.28	79.90	5,066.91	20.10	25,209.19	100.00	69.1	244	103.3



*平成7年9月から現処理施設稼働に伴い浄化槽汚泥処理を開始